

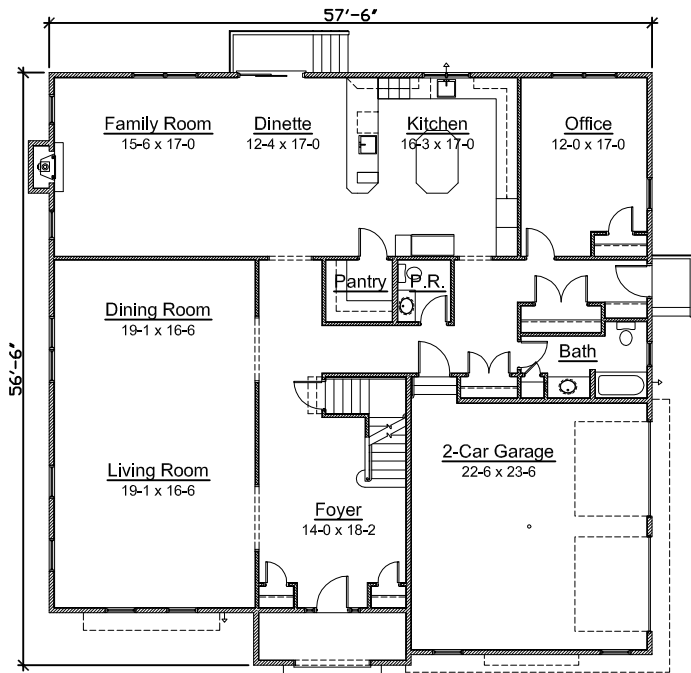
# The Willows

at Wesley Hills

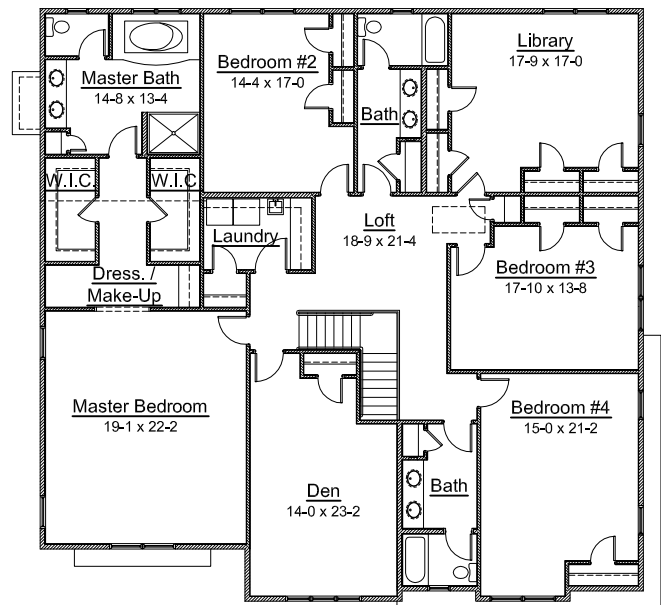


## "The Maccabee II"

C-1 Model



First Floor



Second Floor



WILECKI DEVELOPMENT

Office - (845)369-9325 Fax - (845)369-9326 Mobile - (845)206-5220

Reference #: 5630

**LAN ASSOCIATES**

engineering • planning • architecture • surveying

252 MAIN STREET, GOSHEN, NEW YORK 10924 (845)615-0350

Please note that all dimensions are approximate. All renderings and elevations are conceptual representation only, and are subject to change. The complete offering terms are available from the sponsor.